



# WOODEN DOOR

Catalogue

+86-15501571292

info@ahpbaba.com - [www.ahpbaba.com](http://www.ahpbaba.com)

B2-1910,Zhengkai Wanda Plaza, Wuhan, China

## ENGINEERED WOOD FLUSH DOOR



FD-01

Engineered wood flush doors are built with premium softwood or LVL as inner frames, various type of cores, MDF or plywood skins, veneered or painted. Designed simply, laminated with high grade hardwoods veneer or HPL, finished properly, these doors give people relax and unforgettable feeling.



FD-02



FD-03



FD-04



FD-05



FD-06



FD-07



FD-08



FD-09

## ENGINEERED WOOD FLUSH DOOR



FD-10



FD-11



FD-12



FD-13



FD-14



FD-15



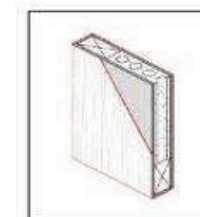
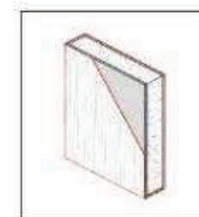
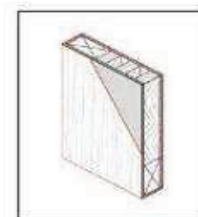
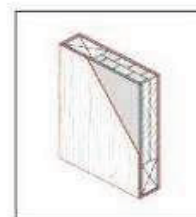
FD-16



FD-17



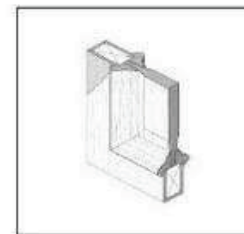
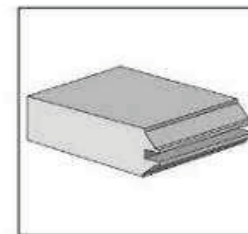
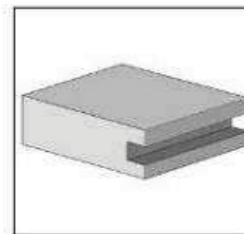
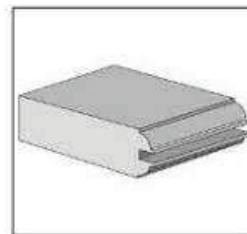
FD-18





## ENGINEERED WOOD PANEL DOOR

Engineered wood panels doors are constructed with stiles, rails, panels, and sticking. We have different sharps of sticking, and also give both options of flat and raised panels. These doors are assembled with stable structure and nice joints. Well controlled moisture content and good materials keep them from risk of cracking, and give people guarantee of 500,000 cycles of opening.



PD-01



PD-02



PD-03



PD-04



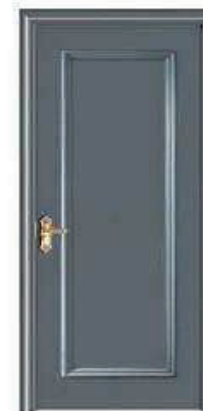
PD-05



PD-06



PD-07



PD-08



PD-09



## ENGINEERED WOOD SHAKER DOOR



SD-01



SD-02



SD-03



SD-04



SD-05



SD-06



SD-07



SD-08



SD-09



## ENGINEERED WOOD GLASS DOOR

Modern architecture and interior design have placed much emphasis on the importance of light within home, hotels or commercial property, particularly in frequently used places such as bathrooms, kitchens, and offices. Our range of glass door designs encourages plenty of natural light to flood any room and help to create a modern, sleek, and contemporary space.



GD-02



GD-03



GD-04



GD-05



GD-06



GD-07



GD-08



GD-09

## ENGINEERED WOOD GLASS DOOR



We have blow glass for options:

- Clear tempered glass
- Laminate glass
- Acid etched glass
- Frosted glass
- Art glass



GD-11



GD-12



GD-13



GD-14



GD-15



GD-16



GD-17



GD-18





## MOULDED HDF DOOR

We have commercial moulded HDF doors with various designs and finishing white primed or veneered. Chipboard and honeycomb paper are stuffed as the core to make them durable and affordable. We ship these doors both knock down or pre-hung for customers with their options.



MD-02



MD-03



MD-04



MD-05

## LAMINATE DOOR



Laminate doors are typically specified for their aesthetically uniform appearance. Hundreds of solid color, various pattern and wood grain options are available. High Pressure Laminate and melamine door faces help resist shock, denting and scratching. Because of their durability and ease of cleaning, they are a popular choice and widely used for medical buildings, schools and universities, government facilities and hotels.



LD-02



LD-03



LD-04



## PVC DOOR



PV-02



PV-03



PV-04



PV-05



PV-06



PV-07



PV-08



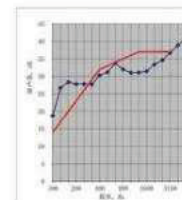
PV-09



## ENTRY DOOR FOR HOSPITALITY



30 minutes fire rated  
entry doors with  
solid wood and metal  
frames.



We passed 33DB  
acoustic test

Usually nme manufactures hotel room entry door with solid wood core and nature wood veneer finishing that makes the surface texture more clear and beautiful. Various colors painted finishing are also very regular and available. Meanwhile high pressure laminate which is considered to be one of the most durable decorative surface materials is also commonly used on these doors.

Our nicely designed Hotel Room Entrance Door are constructed with solid cores, which pass 30, 60 minutes fire rating test and certification according to UL standard, ensure customers' safety and prevent any occurrence of fire.



ED-02



ED-03



ED-04

## BARN DOOR FOR HOSPITALITY

The hotels we are supplying

These barn doors are designed simply with mirror, glass, or panel. Water based painting is mostly used on these doors to eliminate the smell of traditional painting. Veneers, wood for stiles and rails, sliding systems are also selected to keep every door work comfortably.

## MIRROR BARN DOOR

The mirror barn doors are widely used for bathroom of star hotels to save the rooms and give people convenience for dressing. These doors are constructed with mirrors in the front and recessed panel or flush on the back. Mirrors are usually beveled and protected with safety backing. Stainless steel tracks and rollers, soft closing, handles, and pulls are used to make opening or closing doors full of fun.

We have various of finishing on these doors. Oak, walnut, maple, birch, mahogany, teak veneers are very common. Water based or PU painted is very good choice. We can paint it to different colors like white, grey, green, etc. Besides, Formica and Wilsonart High pressure laminate are also often used.



## GLASS BARN DOOR

When the glass doors are used, the bathroom looks to be more bright and give comfort to people. These doors are constructed to be stiles and rails with glass panels insert. These doors are usually 1 full glass, 2-lite, or more. We provide different type of glass such as Laminate glass, finger print free acid etched and tempered glass, Art glass, etc.

We have various of finishing on these doors. Oak, walnut, maple, birch, mahogany, teak veneers are very common. Water based or PU painted is very good choice. We can paint it to different colors like white, grey, green, etc. Besides, Formica and Wilsonart High pressure laminate are also often used. Stainless steel tracks and rollers, soft closing, handles, and pulls are used to make opening or closing doors full of fun.



BD-G-01



BD-G-02



BD-G-03



BD-G-04



BD-G-05



BD-G-06



BD-G-07



## SHAKER STYLE BARN DOOR



BD-S-01

BD-S-02



BD-S-03



BD-F-01

## SOLID CORE FLUSH BARN DOOR



Simply designed, flush barn doors give customers a minimalism and get high rates from young generation. Solid wood, chipboard, tubular chipboard, honeycomb are often used as the core of the doors to meet all people's budget and requirements. To give more options and tastes, some new elements are added on flush doors like grooving, metal trims, and pattern. Installed with stainless steel track systems, or black metal tracks, you'll feel it's not boring to open doors and close doors.



BD-F-02

BD-F-03

BD-F-04

## SOLID WOOD BARN DOOR



These top quality barn doors are made of pine wood, knotty alder, and European oak from or reclaimed wood from old ships and houses. Rustic style, nice design, and various finishing earn people's love.



BD-H-02

BD-H-03

BD-H-04



BD-H-05

BD-H-06

BD-H-07