



Fence Lumber Products

AHPBaba provides high-quality Fence Lumber for global buyers. We work closely with top manufacturers in China to deliver modern designs, premium materials, and precise craftsmanship for residential and commercial projects.

Our services support clients worldwide with competitive pricing, fast delivery, design customization, and full quality assurance — ensuring every project meets international standards.

**China All Over the World
A-to-Z Fence Lumber Products
Better Quality & Better Pricing Than Local Markets Worldwide**

China Office:

+86-15501571292 - info@ahpbaba.com - www.ahpbaba.com
B2-1910, Zhengkai Wanda Plaza, Wuhan, China.

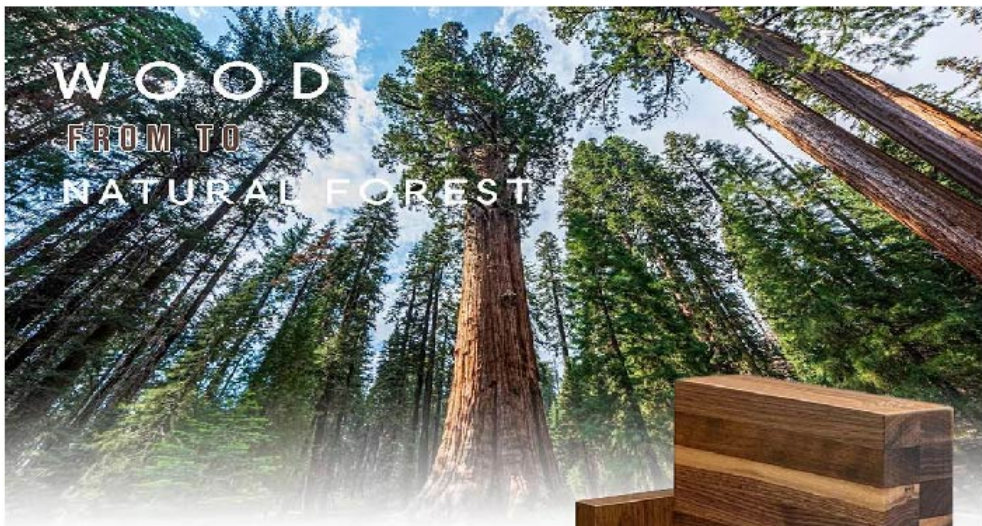
USA Office:

+1 2147151010 - imran@ahpbaba.com - www.ahpbaba.com
13151 Emily rd # 100 Dallas TX 75240.

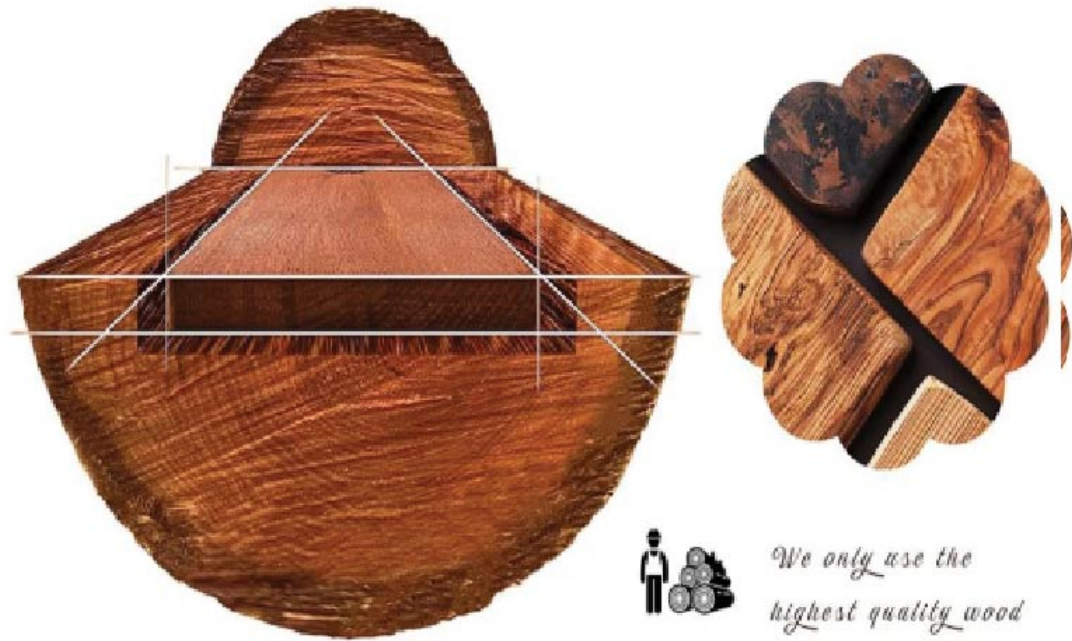
TECHNOLOGICAL

We have our own log storage yard and an excellent production team. We handle both the research and development as well as the mining and sales ourselves. Additionally, as a processing factory, we can customize the processing to meet the specific requirements of our clients! Our mission is to make the wood serve the customers, so that the customers don't have to deal with any non-standard specifications! Our wood is all solid wood. We welcome on-site inspections and visits.





CUTTING THE BEST PARTS OF THE TREE ENSURES THE EXCELLENT QUALITY OF THE PRODUCT



We only use the highest quality wood

SOLID WOOD

DIFFERENT TYPES OF WOOD



Aspen



Brown Maple



Rustic Brown
Maple



Wormy Brown
Maple



Cedar



Cherry



Rustic Cherry



Sap Cherry



Elm



Hard Maple



Hickory



Rustic Hickory



Pine



Rustic Pine



Quartersawn
White Oak



Rustic Quartersawn
White Oak



Red Oak



Rustic Alder



Tiger Maple



Walnut



Rustic Walnut

THE BEST WOOD

We use pure natural high-quality wood. Each board comes from a tree that is more than 20 years old. After being processed by skilled workers, it becomes a high-quality furniture processing material.



Common types of solid wood squares



Name: Birch

HIGH HARDNESS: Birch has a relatively high hardness level and can withstand daily use without developing dents or warping.

GOOD STABILITY: Capable of resisting contraction and expansion

AESTHETICALLY PLEASING: The straight-grain texture of Birch is uniform in quality, with colors ranging from cream white to light yellow. The finished product has a smooth surface, suitable for various staining and painting processes, and can present different effects for decoration.

Recommended uses: Furniture manufacturing, cabinets, flooring



Physical scene
diagram



Name: Pine wood

High cost-effectiveness: Due to the low difficulty in obtaining pine wood and the high production volume, it has a significant advantage in terms of cost-effectiveness.

Natural and environmentally friendly, with pleasant fragrance

Easy to process: The texture is soft, making it easy to cut, polish, and carve.

Wide range of applications: furniture manufacturing, interior decoration, outdoor facilities, handicrafts and





TEAK

1. It has extremely strong stability and is not prone to cracking or deforming. It can be directly used outdoors.
2. Resistant to corrosion and pests, with a service life of up to several decades or even a century.
3. Superior texture: Over time, it will gradually develop a golden color.
4. Natural hardwood material with excellent



ROSEWOOD

1. The material is hard, durable and does not easily wear out or deform.
2. The color and texture initially appear as an orange-red color, but over time they change to a deep purple or black purple shade. It is highly rare.
3. Exceptional durability: Naturally resistant to corrosion, pest infestation, and stable in material properties.
4. High-end redwood furniture, handicrafts, and musical



INTSIA BIJUGA

1. Highly resistant to corrosion and pests, it can withstand moisture and does not require any treatment, thus being suitable for outdoor use.
2. Material stability: Resistant to cracking in various environments
3. Unique appearance, suitable for various styles
4. Good processing adaptability: The material is hard, but it is easy to be sawn and ground, which can meet the processing requirements.

A close-up photograph of a light-colored wood veneer surface. The wood grain is clearly visible, showing a mix of straight and wavy patterns. In the upper right quadrant, there is a circular hole or opening in the veneer, revealing a lighter, possibly white or light blue, material underneath. The lighting is soft, highlighting the texture of the wood.

WOOD VENEER



DYED VENEER SERIES

染色木皮系列

SMOKED VENEER SERIES

烟熏木皮系列

NATURAL VENEER SERIES

天然木皮系列



Natural wood veneer

MOST POPULAR

Mountain pattern

Straight pattern



End Grain Veneer

Diameter:45 cm





TL-染色枫木雀眼01



TL-染色枫木雀眼02



TL-染色枫木雀眼03



TL-染色枫木雀眼04



TL-染色枫木雀眼05



TL-染色枫影03



TL-染色枫影02



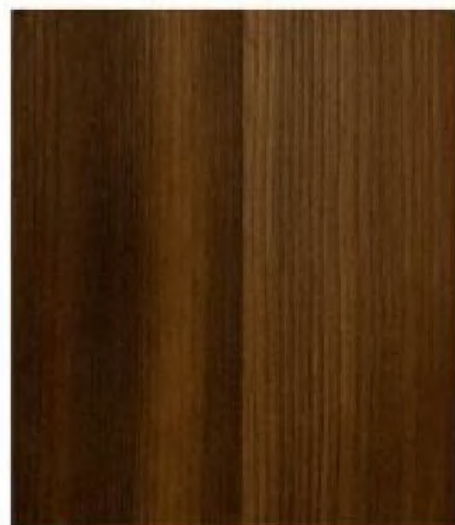
TL-染色枫影01



TL-染色枫木01



TL-染色枫影04



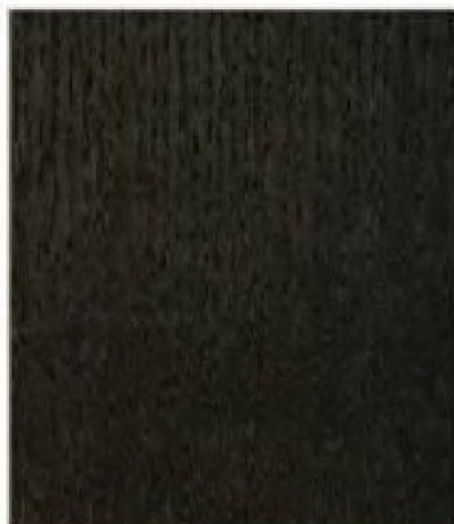
TL-烟薰宾利松



TL-烟薰枫影



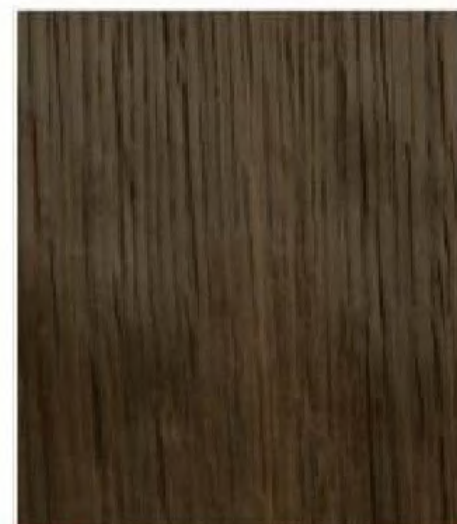
TL-烟薰山纹橡木



TL-烟薰黄直纹欧橡



TL-烟薰锯纹橡木02



TL-烟薰直纹橡木



TL-锯纹黑胡桃



TL-烟薰锯纹橡木01



TL-染色山纹胡桃02



TL-锯纹直纹白橡



TL-染色山纹胡桃04



TL-染色山纹胡桃01



TL-染色山纹核桃02



TL-染色山纹核桃01



TL-染色柚木王02



TL-染色柚木王01



TL-染色尤加利05



TL-染色红影01



TL-染色尤加利01



TL-染色尤加利04



TL-染色尤加利02



TL-染色法国尼斯02



TL-染色法国尼斯01



TL-染色法国尼斯03



TL-染色白象牙01



TL-染色尼斯03



TL-染色KOTO01



TL-染色白象牙02



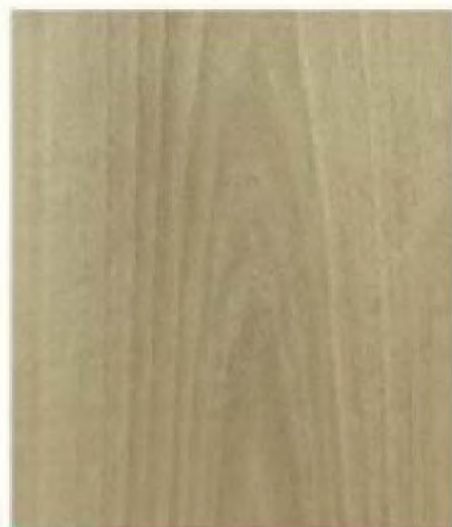
TL-染色尼斯02



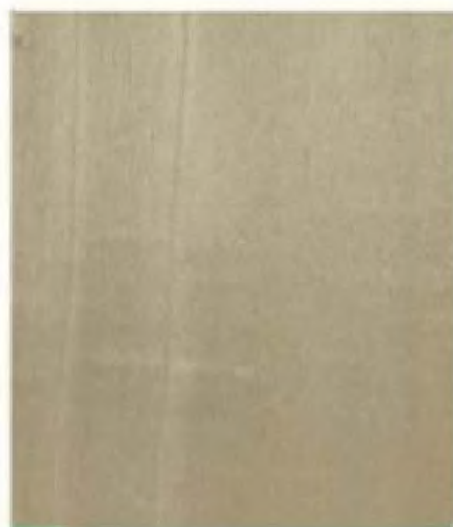
TL-染色山纹黄杨02



TL-染色山纹黄杨05



TL-染色山纹黄杨04



TL-染色山纹黄杨03



TL-染色山纹黄杨01



TL-染色直纹黄杨01



TL-染色直纹黄杨02



TL-染色直纹黄杨03



TL-染色直纹白栓04



TL-染色直纹白栓01



TL-染色直纹白栓02



TL-染色山纹白栓01



TL-染色山纹白栓02



TL-染色山纹白栓03



TL-染色山纹白栓04



TL-染色山纹白栓05



TL-染色山纹白栓06



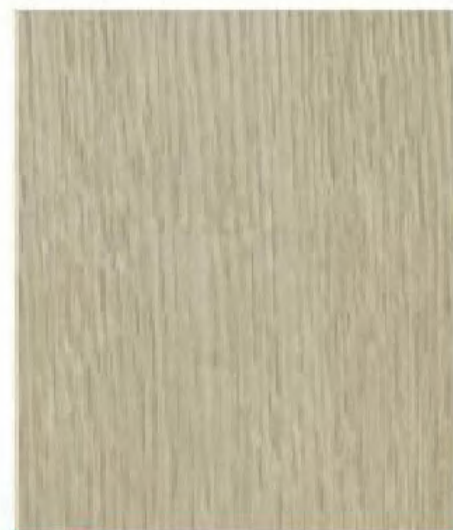
TL-染色直纹橡木01



TL-染色直纹橡木02



TL-染色直纹橡木03



TL-染色直纹橡木04



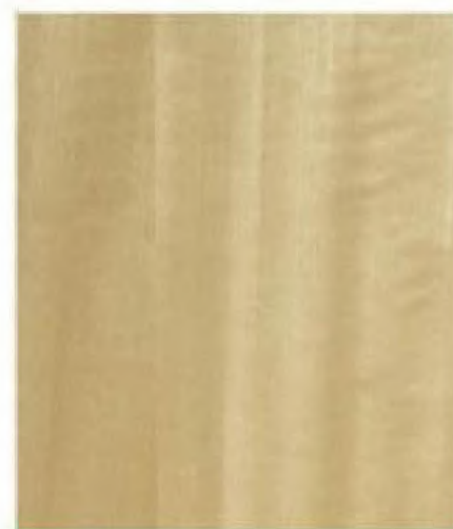
TL-染色直纹橡木05



TL-染色山纹橡木02



TL-染色安利格02



TL-染色安利格03



TL-染色安利格01



TL-染色安利格04



TL-染色阿尤斯01



TL-T美国枫木



TL-染色山纹鸡翅01



TL-染色山纹鸡翅02



TL-染色直纹铁刀01



TL-染色直纹铁刀02



TL-T美国黑胡桃



TL-直纹尤加利



TL-T西南桦



TL-阿尤斯



TL-山纹水曲柳



TL-直纹红榉



TL-T美国直纹白橡



TL-T美国山纹白橡



TL-安利格影



TL-T美国白栓



TL-球纹沙比利



TL-金影



TL-巴西山纹酸枝



TL-直纹大斑马



THANKS

感谢您的观看