



## Metal Building Systems

AHPBaba provides high-quality Metal Buildings and helps U.S. buyers source reliable products directly from top factories in China. We offer competitive pricing, fast delivery, and full quality assurance for every project.

 China &  USA -A-to-Z Metal Building Systems  
Better Quality & Pricing Than the Local Market.

**China Office:**

+86-15501571292 - [info@ahpbaba.com](mailto:info@ahpbaba.com) - [www.ahpbaba.com](http://www.ahpbaba.com)  
B2-1910, Zhengkai Wanda Plaza, Wuhan, China.

**USA Office:**

+1 2147151010 - [imran@ahpbaba.com](mailto:imran@ahpbaba.com) - [www.ahpbaba.com](http://www.ahpbaba.com)  
13151 Emily rd # 100 Dallas TX 75240 - USA.

## Metal Building Systems

Engineering, Design & Manufacturing

**\$9 to \$15** per sqft

USA Standard Quality





## Metal Building Structure

Our steel structures are engineered to meet U.S. building requirements and are fabricated using high-strength H-shaped steel, lightweight thin-wall components, and precision-cut framing members. Roof and wall systems can be customized with pre-painted color-coated panels or insulated sandwich panels for energy efficiency.

These buildings provide:

- Large clear span capacity
- Fast installation and reduced labor cost
- High durability and corrosion resistance
- Lower maintenance compared to traditional construction
- Attractive appearance with customizable exterior finishes

Applications include industrial workshops, warehouses, automotive service buildings, gas stations, car washes, retail stores, storage facilities, agricultural buildings, and multi-purpose commercial structures

## Metal Building Warehouse



Steel Warehouse Building for Industrial Projects

## Metal Building Workshop



## Multi-Storey Metal Building



### Applications

- Office Buildings
- Hotels
- Commercial Buildings
- Shopping Malls
- Residential Homes
- Apartments & Multi-Family Housing



# Metal Building Fabrication



# Metal Building Garage





## K-Type Prefab House | USA Standard

Galvanized steel frame with insulated sandwich wall and roof panels. Fast installation and suitable for worker housing, offices, field camps, and temporary accommodation.

Standard USA Sizes:

- Building Width: 8 ft, 10 ft, 12 ft, 14 ft
- Building Length: 20 ft, 24 ft, 30 ft, 40 ft, 60 ft
- Panel Width: 24 in, 36 in, 48 in
- Panel Thickness: 2 in, 3 in, 4 in
- Steel Sheet Thickness: 0.010–0.020 in

Features: Waterproof, fire-resistant, sound-insulated, energy-efficient.  
Custom sizes and layouts available.

## K-Type Prefab House | USA Standard



### Application:

- Temporary Office Buildings/
- Worker Dormitory/
- Labor Camp/
- Site Headquarters/
- Refugee housing...



 **T-Type Prefab House | USA Standard**



Stronger galvanized steel structure with insulated sandwich panels. Ideal for offices, residential units, classrooms, and semi-permanent housing.

**Standard USA Sizes:**

- Building Width: 8 ft, 10 ft, 12 ft, 14 ft
- Building Length: 20 ft, 24 ft, 30 ft, 40 ft, 60 ft
- Panel Width: 24 in, 36 in, 48 in
- Panel Thickness: 2 in, 3 in, 4 in
- Steel Sheet Thickness: 0.010–0.020 in

Features: Waterproof, fire-resistant, heat-insulated, sound-insulated, relocatable. Custom sizes and layouts available.

 **Luxury Design Prefab House**



**Applications**

- Prefabricated Offices & Accommodation
- Kitchens and Dining Units
- Site Offices & Administrative Buildings
- Mining & Camp Facilities
- Temporary Housing





## Light Steel Villa House

Light steel villa house is one kind of prefabricated house or modular house, it is popular using in the different country no matter it is a rich or poor country as the family home.

They are made of strong metal-steel, sandwich panels or cement fiber boards for wall and roof.

The wall inside and outside can be decorated with different modern materials which make the house look nice and comfortable.

We can follow the customer layout and their requirements to design.

### Features:

- Steel Structure provides time saving.
- Concurrent construction phases reduce the project Schedule.
- Resource-efficient practices produce less waste and less impact on the environment.

### Application:

Residence/Tourist and holiday house/Family house/Government residential project/Real estate development project

## Light Steel Villa House





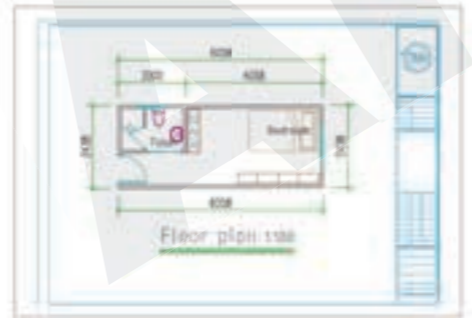
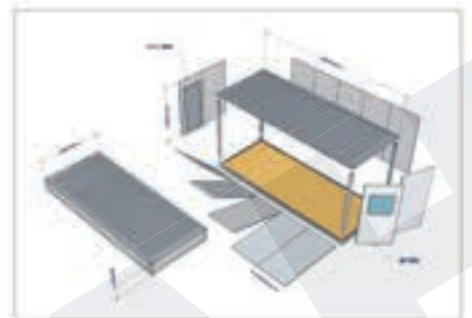
 **Sandwich Panel Container House**



 **CONTAINER HOUSE | USA Standards**

Container houses are modular units designed for fast installation, easy relocation, and multi-purpose use. They are widely used as site offices, dormitories, kitchens, bathrooms, guard rooms, and temporary accommodation.

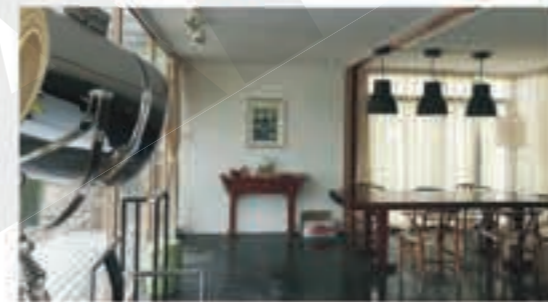
- Features:
1. Strong and safe light-steel structure
  2. Fast assembly and disassembly
  3. Waterproof, fire-resistant, heat-insulated, and sound-insulated
  4. Flexible door and window placement
  5. Custom sizes and layouts
  6. Built according to USA standards



 Shipping Container House



 20ft Metal Sheet Container House Unit





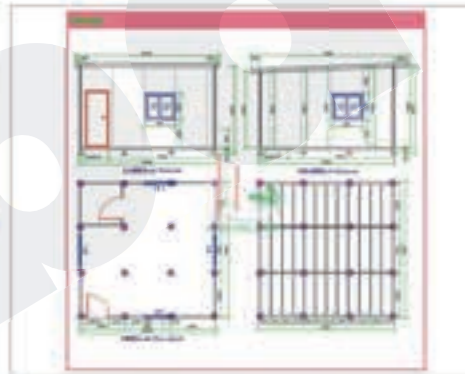
## SENTRY BOOTH & GUARD HOUSE | USA Standards

We supply prefabricated security booths, guard houses, ticket kiosks, and portable booths for commercial and industrial applications. Units can be customized to meet project requirements.

### Advantages:

1. Easy assembly and relocation
2. Excellent waterproof performance
3. Strong heat and sound insulation
4. Multiple design options
5. Custom dimensions
6. Built according to USA standards

## Security House, Guard House



▼ Fiber Cement Board



▼ Cement Sandwich Panel



▼ Steel Sandwich Panel



EPS

Rock wool

PU

Glass wool

▼ OSB Board



Interior decoration board ▼

▼ Floor tile



▼ Exterior wall cladding



▼ Asphalt Shingles



▼ Metal Color Stone roof tile



▼ Sandwich panel sliding door



Color Steel Glazed Tile ▲



Resin Tile ▲



Aluminum sliding door ▲

▼ Steel Door



Composite wooden door ▲

▼ Aluminum window

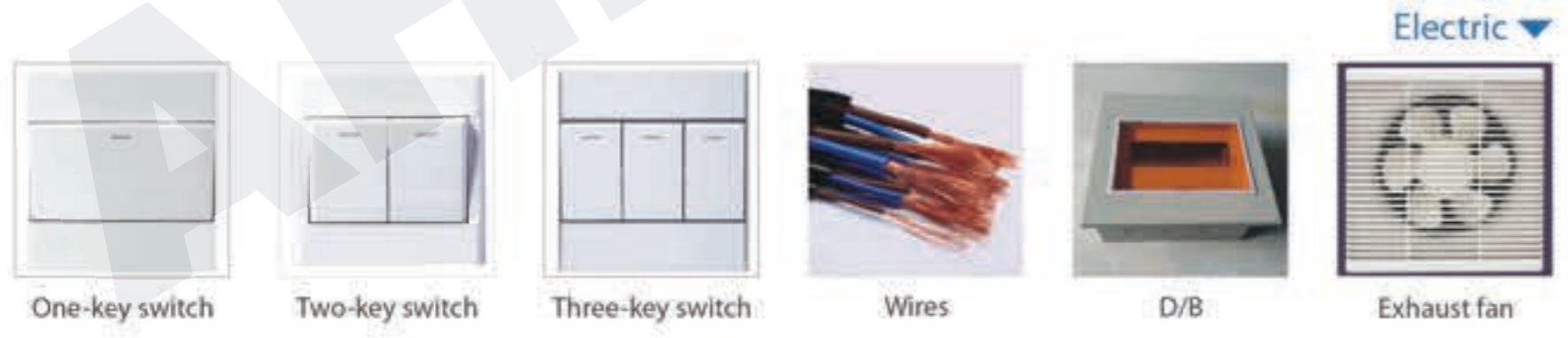


Aluminum shutter ▲

▼ PVC sliding window



▼ Sanitary Equipment



Plumbing and Electrical systems can be supplied according to client's requirements

▼ Furniture



▼ Ceiling

